

HYFORE

— WORKHOLDING —

heimatec®
Live Tools

 Nakamura-Tome

LATHE TOOLING

It's gripping stuff...

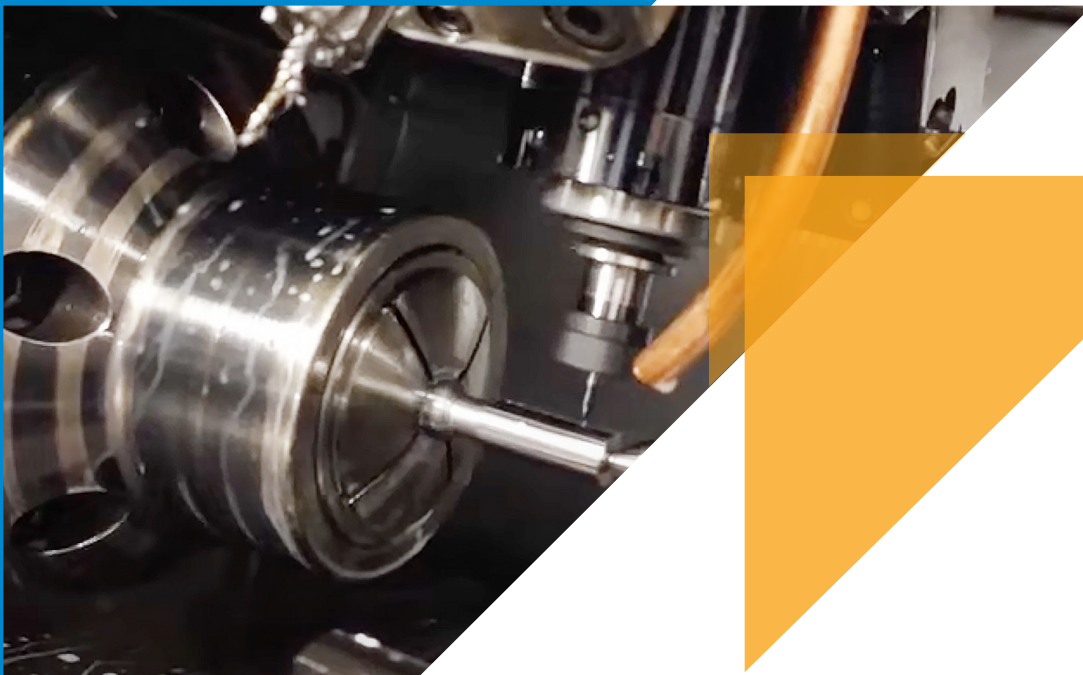
About heimatec

heimatec's live tools for Nakamura-Tome lathes allow for maximum stability and accuracy.

heimatec, is leader in machine tool accessories, specialists in the development and production of precision live and static tools. heimatec tooling is engineered to provide outstanding performance and durability.

All heimatec tools are manufactured with close attention to detail and include superior bearing and gear technology for smooth transmission and high torque output. In addition, their patented u-tec changing system offers flexibility, shorter set-up times, and considerable cost savings.

Find out more today about heimatec tooling for your Nakamura machine, call Hyfore Workholding today on: 024 7699 3153.



NAKAMURA

BMT 44 [62er Revolver | turret (44)]

Machine-Type: *NTY3-100 | WT-100 | WY-100*

Axial drilling and milling head

Web	Part number	Tool adaption	Gear ratio	Rotation max [1/min]	Coolant	Pressure max [bar]
W	8 010 44 056	ER 20 A - u-tec	1:1	6,000	IC/Ext	25 bar
W	8 010 44 078	ER 20 A - u-tec	1:1	8,000	Ext	
W	8 010 44 085	ER 20 A - u-tec	1:1	10,000	IC/Ext	70 bar
W	8 010 45 191	ER 25 A - u-tec	1:1	8,000	Ext	
W	8 010 45 192	ER 25 A - u-tec	1:1	8,000	IC/Ext	25 bar
W	8 010 45 193	ER 25 A - u-tec	1:1	8,000	IC/Ext	70 bar
W	8 010 45 194	ER 25 A - u-tec	1:1	10,000	IC/Ext	70 bar



Radial drilling and milling head

Web	Part number	Tool adaption	Gear ratio	Rotation max [1/min]	Coolant	Pressure max [bar]	Center distance
W	8 030 44 050	ER 20 A - u-tec	1:1	6,000	IC/Ext	140 bar	60 mm
W	8 030 44 058	ER 20 A - u-tec	1:1	6,000	Ext		60 mm
W	8 030 44 102	ER 20 A - u-tec	1:1	10,000	IC/Ext	140 bar	60 mm
W	8 030 45 540	ER 25 A - u-tec	1:1	8,000	Ext		60 mm
W	8 030 45 541	ER 25 A - u-tec	1:1	8,000	IC/Ext	140 bar	60 mm
W	8 039 44 075	2 x ER 20 A - u-tec	1:1	8,000	Ext		60 mm



Universal head ±90° adjustable

Web	Part number	Tool adaption	Gear ratio	Rotation max [1/min]	Coolant
W	8 040 44 031	ER 16	1:1	6,000	Ext
W	8 043 44 001	ER 16	1:1	6,000	Ext



NAKAMURA

BMT 44 [62er Revolver | turret (44)]

Machine-Type: *MX-100*

Axial drilling and milling head

Web	Part number	Tool adaption	Gear ratio	Rotation max [1/min]	Coolant	Pressure max [bar]
W	8 010 44 056	ER 20 A - u-tec	1:1	6,000	IC/Ext	25 bar
W	8 010 44 078	ER 20 A - u-tec	1:1	8,000	Ext	
W	8 010 44 085	ER 20 A - u-tec	1:1	10,000	IC/Ext	70 bar
W	8 010 45 191	ER 25 A - u-tec	1:1	8,000	Ext	
W	8 010 45 192	ER 25 A - u-tec	1:1	8,000	IC/Ext	25 bar
W	8 010 45 193	ER 25 A - u-tec	1:1	8,000	IC/Ext	70 bar
W	8 010 45 194	ER 25 A - u-tec	1:1	10,000	IC/Ext	70 bar



Radial drilling and milling head

Web	Part number	Tool adaption	Gear ratio	Rotation max [1/min]	Coolant	Pressure max [bar]	Center distance
W	8 030 45 199	ER 25 A - u-tec	1:1	6,000	IC/Ext	140 bar	75 mm
W	8 030 45 201	ER 25 A - u-tec	1:1	6,000	Ext		75 mm



Universal head ±90° adjustable

Web	Part number	Tool adaption	Gear ratio	Rotation max [1/min]	Coolant
W	8 040 44 031	ER 16	1:1	6,000	Ext
W	8 043 44 001	ER 16	1:1	6,000	Ext



NAKAMURA

BMT 44 [62er Revolver | turret (44)]

Machine-Type: *MX-100*

Universal turning holder

Web	Part number	Tool adaption	Coolant
W	8 224 14 007	sq. 20/25	Ext
W	8 251 11 004	sq. 20/25	Ext



Boring bar holder

Web	Part number	Tool adaption	Coolant
W	8 240 17 020	Ø 25	IC/Ext
W	8 240 18 025	Ø 32	IC/Ext



Cut-off holder

Web	Part number	Tool adaption	Coolant
W	8 224 12 009	Clampshaft SH26	Ext
W	8 320 13 003	Clampshaft SH32	IC/Ext



NAKAMURA

BMT 44 [62er Revolver | turret (44)]

Machine-Type: *NTJ-100*

Axial drilling and milling head

Web	Part number	Tool adaption	Gear ratio	Rotation max [1/min]	Coolant	Pressure max [bar]
W	8 010 44 056	ER 20 A - u-tec	1:1	6,000	IC/Ext	25 bar
W	8 010 44 078	ER 20 A - u-tec	1:1	8,000	Ext	
W	8 010 44 085	ER 20 A - u-tec	1:1	10,000	IC/Ext	70 bar
W	8 010 45 191	ER 25 A - u-tec	1:1	8,000	Ext	
W	8 010 45 192	ER 25 A - u-tec	1:1	8,000	IC/Ext	25 bar
W	8 010 45 193	ER 25 A - u-tec	1:1	8,000	IC/Ext	70 bar
W	8 010 45 194	ER 25 A - u-tec	1:1	10,000	IC/Ext	70 bar



Radial drilling and milling head

Web	Part number	Tool adaption	Gear ratio	Rotation max [1/min]	Coolant	Pressure max [bar]	Center distance
W	8 030 44 050*	ER 20 A - u-tec	1:1	6,000	IC/Ext	140 bar	60 mm
W	8 030 44 058*	ER 20 A - u-tec	1:1	6,000	Ext		60 mm
W	8 030 45 199	ER 25 A - u-tec	1:1	6,000	IC/Ext	140 bar	75 mm
W	8 030 45 201	ER 25 A - u-tec	1:1	6,000	Ext		75 mm
W	8 030 45 540*	ER 25 A - u-tec	1:1	8,000	Ext		60 mm
W	8 030 45 541*	ER 25 A - u-tec	1:1	8,000	IC/Ext	140 bar	60 mm
W	8 039 44 075*	2 x ER 20 A - u-tec	1:1	8,000	Ext		60 mm
W	8 039 45 079	2 x ER 25	1:1	6,000	Ext		75 mm



Universal head ±90° adjustable

Web	Part number	Tool adaption	Gear ratio	Rotation max [1/min]	Coolant
W	8 040 44 031	ER 16	1:1	6.000	Ext
W	8 043 44 001*	ER 16	1:1	6.000	Ext



NAKAMURA

BMT 44 [62er Revolver | turret (44)]

Machine-Type: **NTJ-100**

Universal turning holder

Web	Part number	Tool adaption	Coolant
W	8 224 14 007	Vkt. 20/25	Ext
W	8 251 11 004**	Vkt. 20/25	Ext



Boring bar holder

Web	Part number	Tool adaption	Coolant
W	8 240 17 020	Ø 25	IC/Ext
W	8 240 18 025	Ø 32	IC/Ext
W	8 253 17 020*	2 x Ø 25 - 15°	IC/Ext



Cut-off holder

Web	Part number	Tool adaption	Coolant
W	8 224 12 009**	Clampshaft SH26	Ext
W	8 320 13 003	Clampshaft SH32	IC/Ext



* upper turret

** lower turret

NAKAMURA

BMT 44 [62er Revolver | turret (44)]

Machine-Type: **SC-100 | SC-100X²**

UPPER TURRET

Axial drilling and milling head

Web	Part number	Tool adaption	Gear ratio	Rotation max [1/min]	Coolant	Pressure max [bar]
W	8 010 44 056	ER 20 A - u-tec	1:1	6,000	IC/Ext	25
W	8 010 44 078	ER 20 A - u-tec	1:1	8,000	Ext	
W	8 010 45 191	ER 25 A - u-tec	1:1	8,000	Ext	
W	8 010 45 192	ER 25 A - u-tec	1:1	8,000	IC/Ext	25
W	8 010 45 194	ER 25 A - u-tec	1:1	10,000	IC/Ext	70



Radial drilling and milling head

Web	Part number	Tool adaption	Gear ratio	Rotation max [1/min]	Coolant	Pressure max [bar]	Center distance
W	8 030 44 050	ER 20 A - u-tec	1:1	6,000	IC/Ext	140	60 mm
W	8 030 44 058	ER 20 A - u-tec	1:1	6,000	Ext		60 mm
W	8 030 45 540	ER 25 A - u-tec	1:1	8,000	Ext		60 mm
W	8 030 45 541	ER 25 A - u-tec	1:1	8,000	IC/Ext	140	60 mm
W	8 039 44 075	2 x ER 20 A - u-tec	1:1	8,000	Ext		60 mm



Universal head ± 90° adjustable

Web	Part number	Tool adaption	Gear ratio	Rotation max [1/min]	Coolant
W	8 040 44 031	ER 16	1:1	6,000	Ext
W	8 043 44 001	ER 16	1:1	6,000	Ext



NAKAMURA

BMT 44 [62er Revolver | turret (44)]

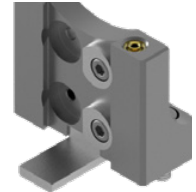
Machine-Type: **SC-100 | SC-100X²**

UPPER TURRET

Cut-off holder

Web	Part number	Tool adaption	Coolant
	8 224 12 008	Clampshaft SH 26	Ext
W	8 224 12 009	Clampshaft SH 26	Ext
W	8 224 13 006	Clampshaft SH 32	Ext
W	8 224 13 012	Clampshaft SH 32	Ext

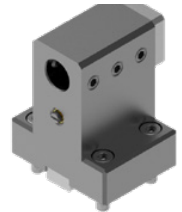
Web	Part number	Tool adaption	Coolant
W	8 224 11 013	sq. 20	Ext
W	8 225 11 006	sq. 20	Ext



Boring bar holder

Web	Part number	Tool adaption	Coolant
W	8 240 18 052	Ø 1 1/4" (31,75mm)	IC/Ext
W	8 240 16 007	Ø 20	IC/Ext
W	8 240 17 020	Ø 25	IC/Ext

Web	Part number	Tool adaption	Coolant
W	8 240 17 086	Ø 25	IC/Ext
W	8 240 18 025	Ø 32	IC/Ext
W	8 240 18 076	Ø 32	IC/Ext



Double turning holder

Web	Part number	Tool adaption	Coolant
W	8 251 11 004	2x sq. 20	Ext
W	8 251 11 008	2x sq. 3/4" (19,05mm)	Ext

Universal turning / combi multiple holder

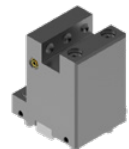
Web	Part number	Tool adaption	Coolant
W	8 224 14 007	2x sq. 20	Ext
W	8 224 14 008	2x sq. 3/4" (19,05mm)	Ext
W	8 251 14 013	4x sq. 20 2x sq. 20 - 15°	Ext
W	8 251 14 023	4x sq. 3/4" 2x sq. 3/4" - 15°	Ext



Double turning holder

Facing holder

Web	Part number	Tool adaption	Coolant
W	8 244 11 003	sq. 20	Ext



Facing holder

LOWER TURRET

Web	Part number	Name	Tool adaption	Coolant
W	8 224 14 021	Universal turning holder	sq. 20	Ext
W	8 259 14 006	Combimultiple turning holder	2x sq. 20 2x sq. 20 ± 30°	Ext



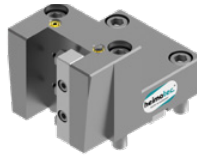
NAKAMURA

BMT 44 [62er Revolver | turret (44)]

*Machine-Type: **NTY3-100 | WT-100 | WY-100***

Universal turning holder

Web	Part number	Tool adaption	Coolant
W	8 224 14 007	sq. 20/25	Ext
W	8 251 11 004	sq. 20/25	Ext



Boring bar holder

Web	Part number	Tool adaption	Coolant
W	8 240 17 020	Ø 25	IC/Ext
W	8 240 18 027	Ø 32	IC/Ext
W	8 253 17 020	2 x Ø 25 - 15°	IC/Ext



Cut-off holder

Web	Part number	Tool adaption	Coolant
W	8 224 12 009	Clampshaft SH26	Ext
W	8 320 13 003	Clampshaft SH32	IC/Ext



NAKAMURA

BMT 55 [80er Revolver | turret (55)]

Machine-Type: AS-200 | NTY3-150 & -250 | WT-150 & -250 | WY-150 & -250

Axial drilling and milling head

Web	Part number	Tool adaption	Gear ratio	Rotation max [1/min]	Coolant	Pressure max [bar]
W	8 010 55 033	ER 25 A - u-tec	1:1	6,000	Ext	
W	8 010 55 034	ER 25 A - u-tec	1:1	6,000	IC/Ext	25 bar
W	8 010 55 098	ER 25 A - u-tec	1:1	8,000	IC/Ext	70 bar
W	8 010 55 111	ER 25 A - u-tec	1:1	10,000	IC/Ext	70 bar
W	8 010 56 063	ER 32 A - u-tec	1:1	6,000	Ext	
W	8 010 56 064	ER 32 A - u-tec	1:1	6,000	IC/Ext	25 bar
W	8 010 56 140	ER 32 A - u-tec	1:1	6,000	IC/Ext	70 bar



Radial drilling and milling head

Web	Part number	Tool adaption	Gear ratio	Rotation max [1/min]	Coolant	Pressure max [bar]	Center distance
W	8 030 55 091	ER 25 A - u-tec	1:1	6,000	IC/Ext	140 bar	65 mm
W	8 030 55 092	ER 25 A - u-tec	1:1	6,000	Ext		65 mm
W	8 030 56 095	ER 32 A - u-tec	1:1	6,000	Ext		65 mm
W	8 030 56 096	ER 32 A - u-tec	1:1	6,000	IC/Ext	140 bar	65 mm
W	8 030 56 236	ER 32 A - u-tec	1:1	12,000	IC/Ext	140 bar	65 mm
W	8 039 55 042	2 x ER 25 A - u-tec	1:1	6,000	Ext		65 mm



Universal head

Web	Part number	Tool adaption	Gear ratio	Rotation max [1/min]	Coolant	Adjustment range
W	8 040 54 002	ER 16	1:1	6,000	Ext	±90°
W	8 043 54 000	ER 16 A - u-tec	1:1	6,000	Ext	+135°/-30°
W	8 043 55 001	ER 25 A - u-tec	1:1	6,000	Ext	+135°/-30°



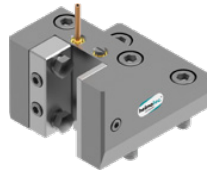
NAKAMURA

BMT 55 [80er Revolver | turret (55)]

Machine-Type: AS-200 | NTY3-150 & -250 | WT-150 & -250 | WY-150 & -250

Universal turning holder

Web	Part number	Tool adaption	Coolant
W	8 224 15 002	sq. 25/20	Ext
W	8 251 11 003	sq. 20	Ext
W	8 251 14 004	6 x sq. 20	Ext



Boring bar holder

Web	Part number	Tool adaption	Coolant
W	8 240 17 005	Ø 25	IC/Ext
W	8 240 18 010	Ø 32	IC/Ext
W	8 240 19 009	Ø 40	IC/Ext



Cut-off holder

Web	Part number	Tool adaption	Coolant
W	8 224 13 007	Clampshaft SH32	Ext
W	8 320 13 002	Clampshaft SH32	IC/Ext



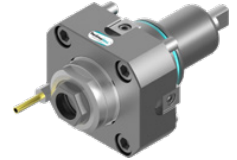
NAKAMURA

BMT 65 [100er Revolver | turret (65)]

Machine-Type: SC-300 | WT-300

Axial drilling and milling head

Web	Part number	Tool adaption	Gear ratio	Rotation max [1/min]	Coolant	Pressure max [bar]
W	8 010 66 126	ER 32 A - u-tec	1:1	6,000	Ext	
W	8 010 66 066	ER 32 A - u-tec	1:1	5,000	IC/Ext	25 bar
W	8 010 66 127	ER 32 A - u-tec	1:1	6,000	IC/Ext	70 bar



Radial drilling and milling head

Web	Part number	Tool adaption	Gear ratio	Rotation max [1/min]	Coolant	Pressure max [bar]	Center distance
W	8 030 66 078	ER 32 A - u-tec	1:1	6,000	Ext		65 mm
W	8 030 66 090	ER 32 A - u-tec	1:1	6,000	IC/Ext	140 bar	65 mm
W	8 039 66 028	2 x ER 32 A - u-tec	1:1	6,000	Ext		65 mm



Universal head +100°/-20° adjustable

Web	Part number	Tool adaption	Gear ratio	Rotation max [1/min]	Coolant
W	8 043 65 002	ER 25 A - u-tec	1:1	6,000	Ext



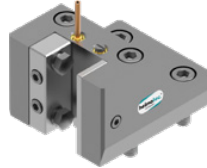
NAKAMURA

BMT 65 [100er Revolver | turret (65)]

Machine-Type: SC-300 | WT-300

Universal turning holder

Web	Part number	Tool adaption	Coolant
W	8 224 15 000	sq. 25	Ext
W	8 251 15 000	sq. 20	Ext



Boring bar holder

Web	Part number	Tool adaption	Coolant
W	8 240 18 000	Ø 32	IC/Ext
W	8 240 19 000	Ø 40	IC/Ext



Cut-off holder

Web	Part number	Tool adaption	Coolant
W	8 320 13 004	Clampshaft SH32	IC/Ext

